



SAILING INSTRUCTIONS

2023 Round the Bay - WEST

Saturday, 20 May 2023

1. RULES

- 1.1. The regatta will be governed by the rules as defined in *The Racing Rules of Sailing* (RRS).

2. COMMUNICATION

- 2.1. The official notice board for NoRs, SIs and NoSs is online at https://nextsailor.com/regatta/2023RTB_W (also the QR code at the top)
- 2.2. Racing communications will also be posted “hardcopy” as conditions permit on the BBSC corkboard in the side room of L.J. Schooner’s Bar & Grill.
- 2.3. The competitor’s meeting will be in-person at the Bluewater Bay Marina on Friday evening per the schedule written in 6. (below).
- 2.4. Changes to the sailing instructions will be posted as soon as they take effect. Changes made at the skipper’s meeting will be posted following the skipper’s meeting.

3. ELIGIBILITY & ENTRY

- 3.1. The race is open to all PHRF rated boats. Entries without a GYA PHRF certificate will be assigned a rating by the Fleet Captain.
- 3.2. Eligible boats may register electronically at [nextSailor.com](https://nextsailor.com), at the following Link: https://nextsailor.com/regatta/2023RTB_W (also the QR code at top)

4. SIGNALS MADE ASHORE

- 4.1. No signals are planned to be made from ashore if race committee is on station. If race committee is not on station, signals will be displayed from the end of the elevated dock that extends westward from the beach-area of the Bluewater Bay Marina Complex.
- 4.2. When flag ‘AP’ is displayed ashore, “1 minute” is replaced with, “not less than 30 minutes” for RRS race signals regarding “AP.”

5. CLASSES

- 5.1. The competition will feature two classes:
- 5.1.1. Spinnaker Class
- 5.1.2. X-Class – “back calculated rating of known boats/crew. Any entry choosing to participate in X-Class will have a rating assigned by the fleet captain.

6. SCHEDULE

- 6.1. Friday, 19 May:
- 5:30 PM In person Registration @ L.J. Schooner’s Pavilion
- 6:30 PM Competitor’s Meeting
- 6.2. Saturday, 20 May:
- 11:00 AM First Boat Starts (Bermuda Start)
- 6:30 PM Results / Awards (approximate time)



7. CHECK IN

- 7.1. All participating boats will be assigned a start time at or after the competitor's meeting, and receipt of that time will be considered "checked-in."

8. RACECOURSES

- 8.1. Race Committee will announce one of three course options for both classes at the competitor's meeting. Both Classes will race the same course:

8.1.1. Course A: RTB-W 20.7

- Start
- ICW #58 Starboard
- Black Point #2 Starboard
- FWYC "W" (N30-25.68 W086-33.711) Port
- Santa Rosa Sound Entrance Buoy 2 (aka "Okie 2") Port
- Boggy #1 Port
- Rocky #1 Port
- Finish

Total Distance: 20.7 NM

8.1.2. Course B: RTB-W 17.3

- Start
- Rocky #1 Starboard
- Boggy #1 Starboard
- Black Point #2 Starboard
- FWYC "W" (N30-25.68 W086-33.711) Port
- Santa Rosa Sound Entrance Buoy 2 (aka "Okie 2") Port
- Boggy #1 Port
- Rocky #1 Port
- Finish

Total Distance: 17.3 NM

8.1.3. Course C: RTB-W 16.3

- Start
- Rocky #1 Starboard
- Boggy #1 Starboard
- Santa Rosa Sound Entrance Buoy 2 (aka "Okie 2") Port
- Boggy #1 Port
- Rocky #1 Port
- Finish

Total Distance: 16.3 NM

- 8.2. **Approaching the Intercoastal Waterway:** Be aware of the enhanced opportunities to avoid collision with other vessels in this area. Many rental boats with limited knowledge of COMDTINST M16672.2D "Navigation Rules – INLAND," may be traversing this area. Conversely, be aware of the enhanced opportunity to avoid collision with commercial (barge) traffic who will have an extensive knowledge of the same. For the rental & pleasure boats, be ready to give-way in a position to stand-on **OR** stand-on when in a give-way



position. For the commercial traffic, monitor Channel 16 and be prepared to use voice communications to avoid conflict.

9. MARKS

- 9.1. Non-government marks shall be described at the competitor's meeting.

10. THE START

- 10.1. The starting line will be in Rocky Bayou. The committee boat make/model will be described in the competitor's meeting and will have a Blue "RC" flag and an orange flag depicting the starting line. The RC boat will set the Starboard side of the line, with an orange ball setting the Port side of the line.
- 10.2. Bermuda Start: Each boat will have a starting time assigned at the competitor's meeting.
- 10.3. Remain clear of the starting line for boats nearing their starting times (have some situation awareness and be polite).
- 10.4. One horn blast will be made from the committee boat for each individual start time.
- 10.5. If any part of a boat's hull is on the course side of the starting line before her starting signal and she is identified, the RC may broadcast her sail number on the pre-briefed VHF radio channel. The failure of any boat to hear the hail, untimeliness of the hail, the order of hail, or failure to hail all or some boats shall not be grounds for redress. This modifies RRS 62.1(a).

11. THE FINISH

- 11.1. The finishing line will be the same as the starting line.
- 11.2. **Late Finish / RC not on station:** The race committee *should* be on station to record your finish until 6:00 PM. After this time, or if the RC boat is not on station, please finish at the Wednesday night buoy on a line visible from the elevated dock described in 4. (above). Note / record your finish time, and text that information to (702) 686-9042.
- 11.3. **Time Limit:** There is NO time limit.

12. PENALTY SYSTEM

- 12.1. RRS 44.1 is changed such that a Two-Turn Penalty is replaced by One-turn penalty for Part 2 and Rule 31 violations, except two turns when in the zone around a mark.

13. PROTESTS AND REQUESTS FOR REDRESS

- 13.1. Protest forms are available from the race committee (as conditions and situation permits), and from the Fleet Captain.
- 13.2. Protests, request for redress, and request for reopening shall be delivered to the Race committee or Fleet Captain within the posted protest time limit.
- 13.3. The protest time limit is 30 minutes after the Race Committee signal boat has returned and the RC has returned.
- 13.4. Persons will be notified, and notices will be posted no later than 20 minutes after the protest time limit to inform competitors of hearings in which they are parties or named as witnesses.

14. SCORING

- 14.1. "Round the Bay" will be scored as a two-race regatta held on separate days. This event is the **second** of the two events in the regatta.
- 14.2. The Low Point System of Appendix A of the RRS will apply.



14.3. No score shall be excluded.

15. SAFETY REGULATIONS

15.1. Notify the Race Committee as soon as possible if retiring from the race.

16. RADIO COMMUNICATION

16.1. The RC will transmit/receive with competitors on VHF channel 72.

17. PRIZES

17.1. Preliminary results and awards for the top three finishers in each class will be announced at L.J. Schooners after the race.

18. DISCLAIMER OF LIABILITY

18.1. RRS 3 States the following: 'The responsibility for a boat's decision to participate in a race or to continue to race is hers alone.' By participating in this event each competitor agrees and acknowledges that each skipper is responsible for his/her vessel and crew.

19. FURTHER INFORMATION

nextSailor website: https://nextsailor.com/regatta/2023RTB_W

(Or QR Code at the top)

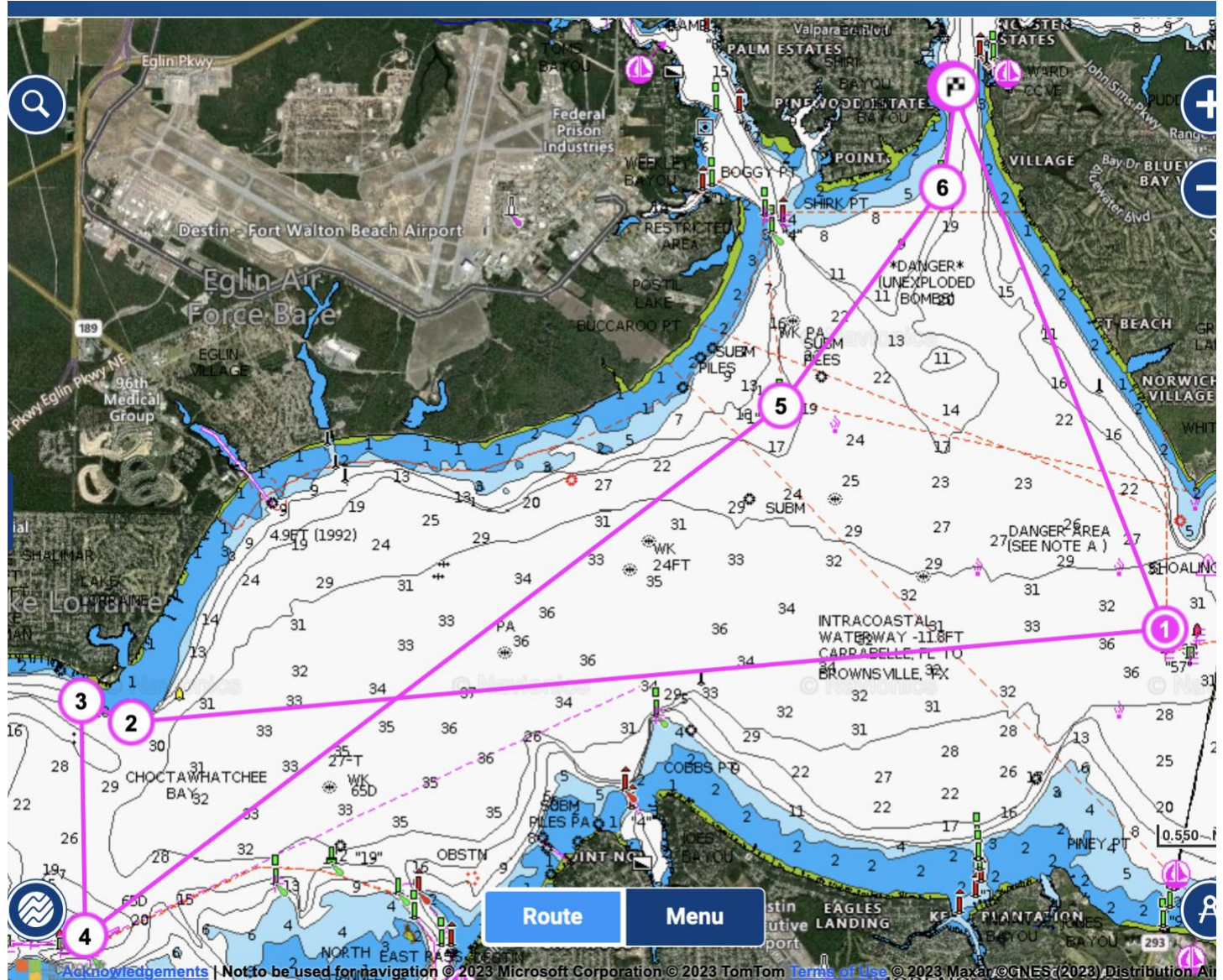
BBSC PHRF Fleet Captain PHRF-Fleet-Captain@bbsc.com (702) 686-9042

20. REVISIONS: 0



APPENDIX A: Racecourse Depictions

Racecourse A, 20.7 NM:

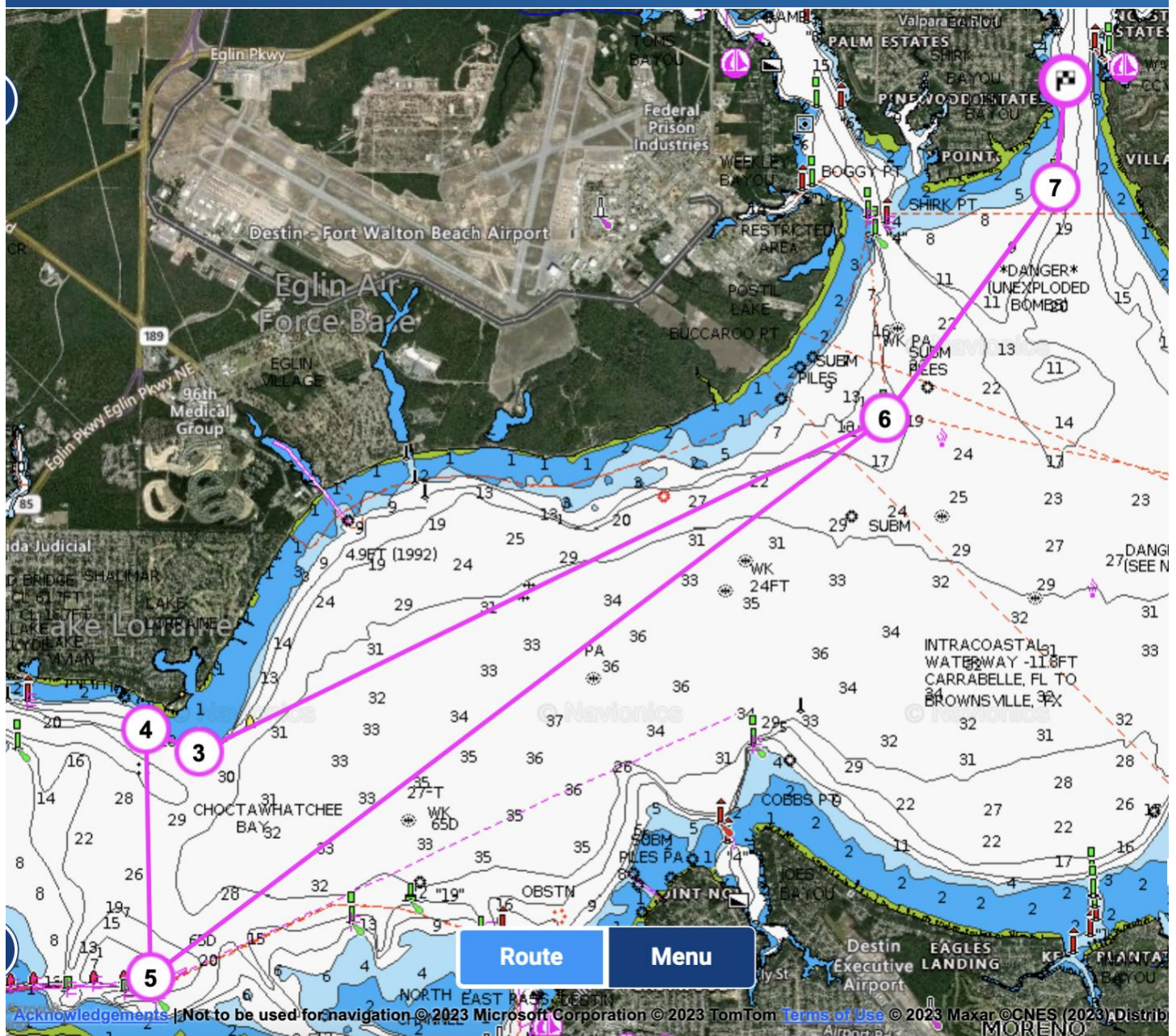




BLUEWATER BAY SAILING CLUB



Racecourse B, 17.3 NM:







BLUEWATER BAY SAILING CLUB



APPENDIX B: Starting Sequence per RRS 26

N/A: Round the Bay – West will be a “Bermuda Start.”



APPENDIX C: Important Flag Signals

'P' Prep

'X' individual recall

'AP' Postponement (Code flag below)

'L' Come within hail (or follow me)

'S' shortened course

