

# 2023 WETA FEST



Organizing Authority

## Weta Class North American Association

This event is the final leg of the 2022 Florida Championship Series

## SAILING INSTRUCTIONS

### 1. RULES

- 1.1. The regatta will be governed by the rules as defined in *The Racing Rules of Sailing* and the *Weta Class North American (WCNA)* rules.
- 1.2. US Sailing prescription RRS 63.2 will not apply.

### 2. NOTICES TO COMPETITORS

Notices to competitors will be posted on the official notice board(s) located on back patio.

### 3. CHANGES TO SAILING INSTRUCTIONS

Any change to the sailing instructions will be posted before 0900 on the day it will take effect, except that any change to the schedule of races will be posted by 2000 on the day before it will take effect.

### 4. SIGNALS MADE ASHORE

- 4.1. Signals made ashore will be displayed on the yardarm on the FWYC back lawn.
- 4.2. When flag AP is displayed ashore, '1 minute' is replaced with 'not less than 30 minutes' in the race signal AP.

### 5. SCHEDULE

Date		Time
4-21-2023	Check-in/ Verification	0900
	Skippers Meeting	1100
	First Warning	1155
	Subsequent races to follow	
	Low Country Boil and Live Music	1700
4-22-2023	Skippers Meeting	1100
	First Warning	1155
	Subsequent races to follow	
4-23-2023	Skippers Meeting	1000
	First Warning	1055
	Awards, Burgers & Dogs (Back Patio)	1600

### 6. CLASS FLAGS

- 6.1. The warning signal will be a white flag with WETA in black letters.
- 6.2. The upwind finish signal will be division flags. Single-handed will be the class insignia 'W' on a white background, and double-handed division class insignia 'W W' on white background.

## **7. RACING AREA**

The racing area will be waters surrounding Fort Walton Yacht Club.

## **8. THE COURSES**

8.1. The diagrams in Attachment A show the possible courses.

## **9. MARKS**

9.1 Mark one will be an orange inflatable.

9.2 Mark 1a will be orange or red hip hop ball.

9.3 The starting mark will be either an anchored vessel flying an orange flag or green inflatable.

9.5 The finish mark may be orange or red hip hop ball.

9.6 New marks as described in SI 11 will be yellow inflatable marks.

## **10. START**

10.1. Races will be started by using rule 26 with a wake-up signal of multiple sounds 1 minute before the warning signal.

10.2. The starting line will be between a staff displaying an orange flag on the signal vessel and the course side of the mark.

10.3. If any part of the boat's hull is on the course side of the starting line at her starting signal and she is identified, the RC will attempt to broadcast sail number on VHF channel 72. Failure to make a broadcast, the order of sail numbers called, or to time it accurately will not be grounds for redress. This changes RRS 62.1a.

## **11. CHANGE OF THE NEXT LEG OF THE COURSE**

11.1. To change the next leg of the course, as allowed by RRS 33, the race committee will lay a new mark, move the finishing line or move the gate and remove the old mark as soon as practicable. Mark 1a (offset) is eliminated when the weather mark is changed. When a subsequent change of the new mark is required it will be replaced by an original mark.

## **12. THE FINISH**

12.1 The finishing line will be between the staff displaying a blue flag on the signal vessel and the course side of the finishing mark described in SI 9.5.

12.2 Code flag A flying at the finish indicates "no more racing today".

## **13. PENALTY SYSTEM**

13.1 The first two sentences of RRS 44.1 are changed to: "A boat may take a One-Turn penalty when she may have broken a rule in Part 2 or RRS 31 while *racing*; and while in the *zone* around a *mark* other than the *starting mark*, her penalty shall be a One-Turns penalty.

## **14. TIME LIMITS**

14.1 In accordance with RRS 35 the time limit for each race will be 90 minutes.

14.2 If no boat has passed Mark 1 within 30 minutes the race will be abandoned.

14.3 Boats failing to finish within twenty (20) minutes after the first boat in the division sails the course and finishes will be scored Time Limit Expired without a hearing. TLE will be scored as finishers plus 1 (one). This changes RRS 35, A4.1, A5 and A11.

## **15. HEARING REQUESTS**

**15.1** Hearing Request forms will be available at the Notice Board on the FWYC patio and will be delivered there within the appropriate time limit.

**15.2** The protest time limit is one (1) hour after the signal vessel docks after the last race of the day or the RC signals no more racing today, whichever is later.

**15.3** Notices will be posted no later thirty (30) minutes after the protest time limit to inform competitors of hearings in which they are parties or named as witnesses. Hearings will be held in the “Commodore’s Room” inside the main clubhouse, beginning at the time posted on the Official Notice Board. All parties to Protest Meetings shall meet the judges table ten (10) minutes prior to their hearing. Protest Meetings that do not have all parties present at its start will be moved to the end of the line.

## **16. SCORING**

**16.1** The Low Point System of RRS Appendix A2 will be used. A boats series score will be the total of her race scores, excluding her worst score if five (5) or more races have been completed.

**16.2** Three (3) races must be sailed and completed to constitute a regatta.

## **17. SAFETY REGULATIONS**

**17.1** Check-In: All boats shall check in with the RC signal vessel displaying the “L” flag at least five minutes prior to the first warning signal of each day. Each boat shall sail past the RC signal vessel and hail her sail number until acknowledged by the RC. Failure to do so will be a twenty (20) percent penalty in the first race of each day.

**17.2** Retirement: A boat that retires from a race shall notify the RC as soon as possible.

## **18 RADIO COMMUNICATIONS**

**18.1** All radio communication between the RC and the competitors will be on VHF channel 72. VHF radios are allowed by the class for this event and are encouraged. Class rules regarding other electric/electronic devices will remain in place.

**18.2** Various race information, including notification of OCS boats after the start, may be provided by the RC as a courtesy to the competitors. This does not in any way alter the competitor’s responsibility to observe the RC’s signals which shall govern the conduct of racing.

**18.3** Except in an emergency, a boat shall neither make nor receive radio communications that are not available to all boats.

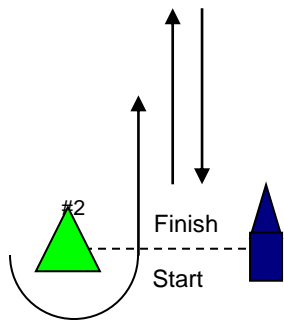
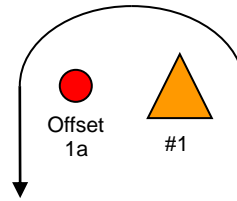
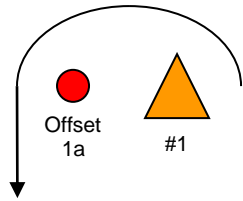
## **19 PRIZES**

**19.1** Awards shall be presented to the top 3 of boats within a class.

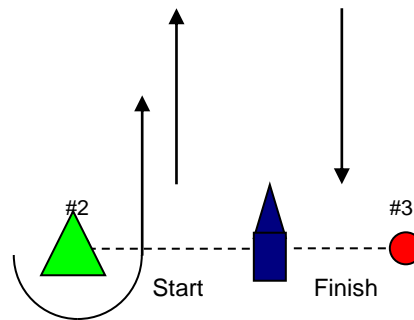
## **20 DISCLAIMER OF LIABILITY**

Competitors participate in the regatta entirely at their own risk. See rule RRS 4, Decision to Race. The organizing authority will not accept any liability for material damage or personal injury, or death sustained in conjunction with or prior to, during, or after the regatta.

## Attachment A Course Diagrams



W Course



A Course

<u>COURSE **</u>	<u>SEQUENCE</u>	<u>FINISH MARK</u>
W1	Start - 1 - 1a - Finish	#2 to Starboard
W2	Start - 1 - 1a - 2 - 1 - 1a - Finish	#2 to Starboard
W3	Start - 1 - 1a - 2 - 1 - 1a - 2 - 1 - 1a - Finish	#2 to Starboard
A1	Start - 1 - 1a - Finish	#3 to Port
A2	Start - 1 - 1a - 2 - 1 - 1a - Finish	#3 to Port
A3	Start - 1 - 1a - 2 - 1 - 1a - 2 - 1 - 1a - Finish	#3 to Port

\*\* The letter indicates the finish line location while the digit indicates the number of laps.