

Five Forts Race Addendum #1

May 17, 2024

Signals:

RRS 26 (Starting Races) as changed below:

CLASS	TIME	SIGNAL	CLASS FLAG
	1055	Warning	
CRCA Racer	1100	Start	Green
CRCA Cruiser	1105	Start	White

The Start is modified as follows: Between orange flag on Race Committee boat and RCRA yellow buoy “A”.

Rule 32.2 is modified as follows: Each boat shall pass sufficiently close to each course mark to ascertain whether the course has been shortened at any of the course marks.

RRS 90.2 (c) as modified in the NOR is in effect: Oral changes to the SI’s may occur on the water prior to the Warning Signal.

GSI Rule 17.1 is modified as follows: For penalties while racing, RRS 44.1, One-Turn Penalties ONLY will apply.

Safety Equipment Requirements: US Sailing Monohull SER Nearshore is in effect for this race. <https://www.ussailing.org/wp-content/uploads/2023/03/Monohull-SER-2023.0-Nearshore.pdf>

Course: Designated by letters displayed on Race Committee boat using standard CBYRA Baltimore Harbor & Patapsco River Marks & Northern Bay Racing Marks, with modifications as shown on attached.

Race Marks also include RCRA Yellow Marks

RCRA “A” N39° 10.902, W076 29.291’

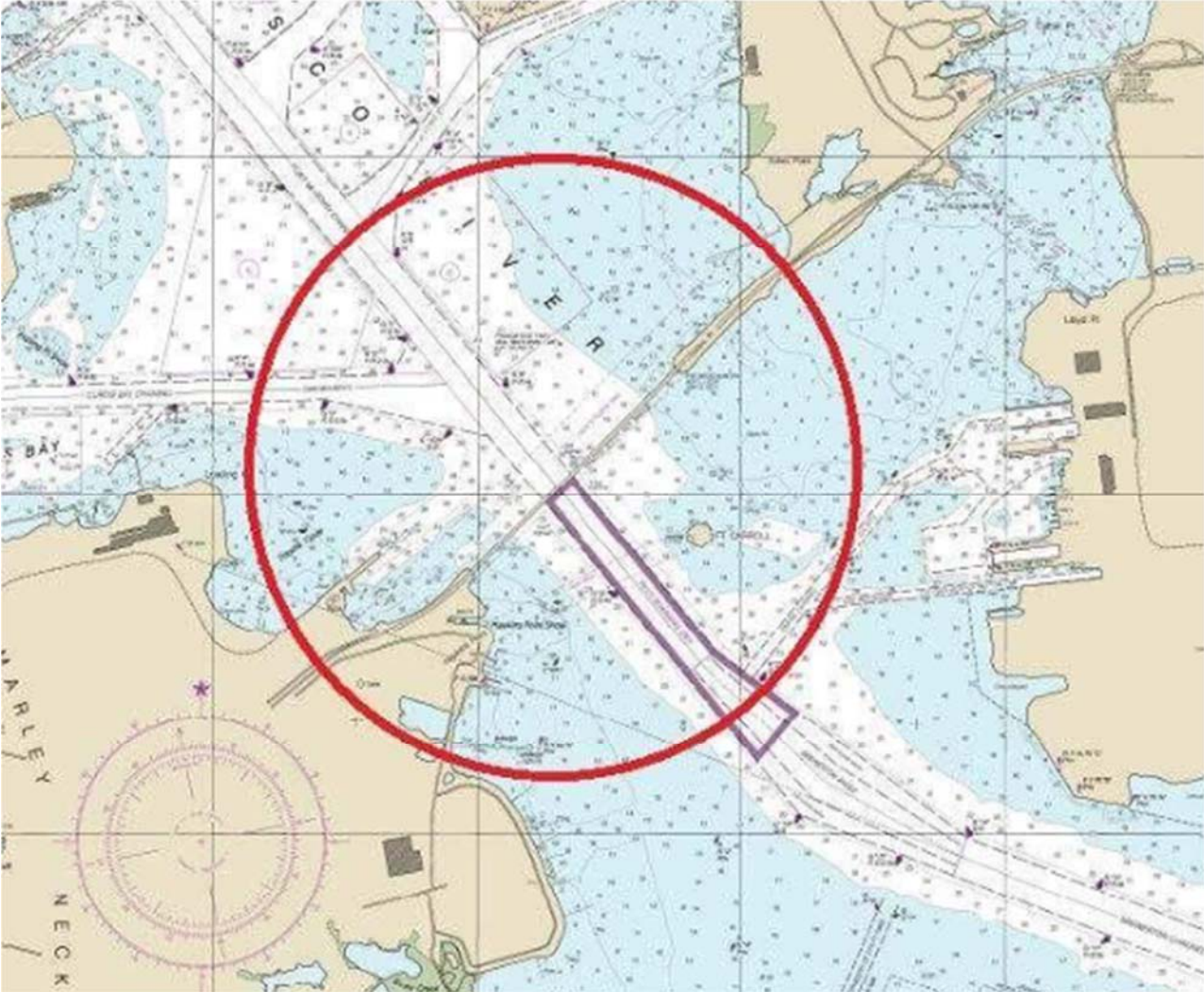
RCRA “B” N39° 10.117, W076 29.706’

RCRA “C” N39° 10.500, W076 28.500’

Obstructions: Boats shall not enter US Coast Guard “Safety or Security Zones” (see CFR 165.500 and Notice to Mariners). These zones rank as “obstructions”.

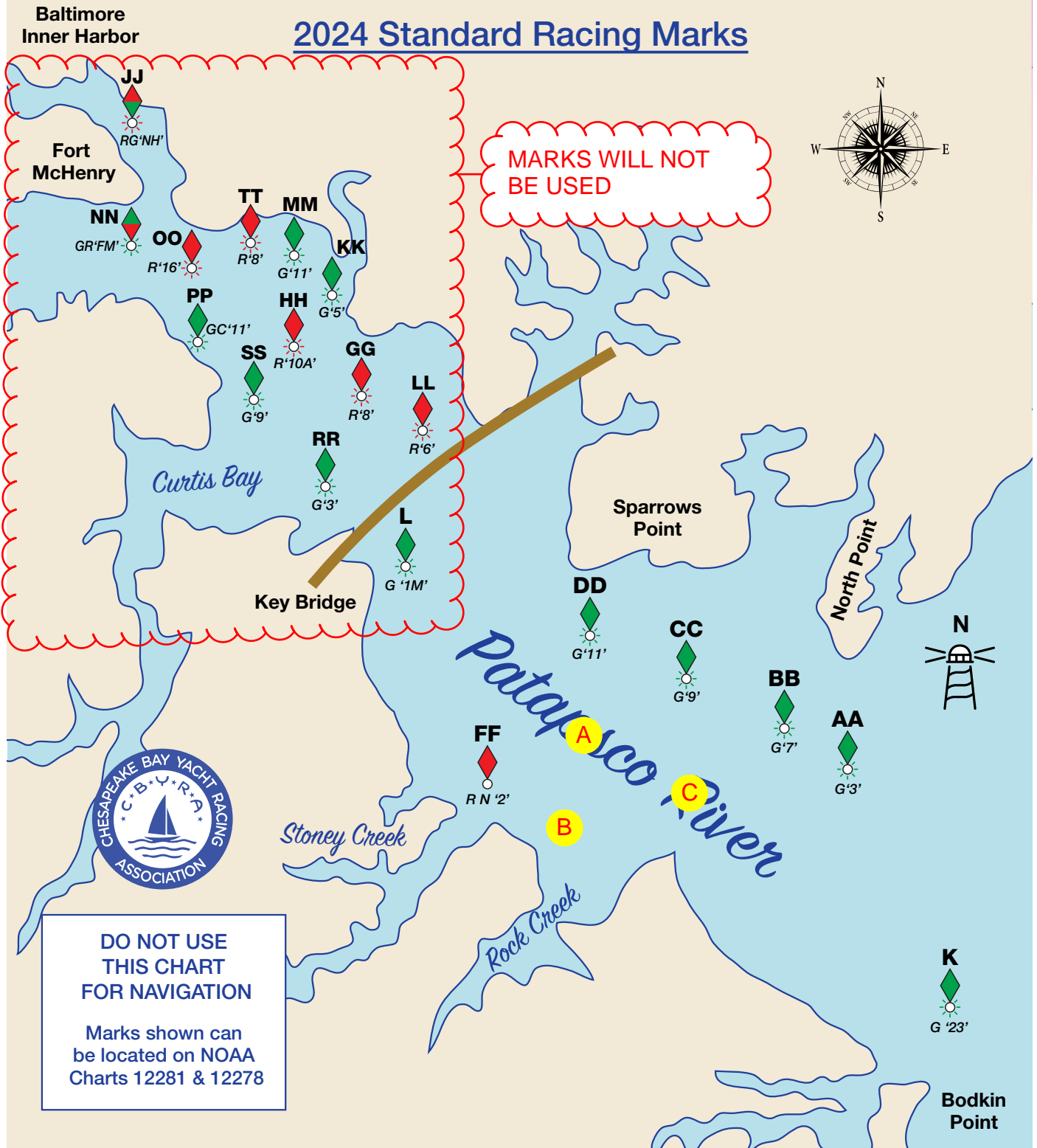
This includes the 2,000-yard safety zone around the Key bridge as indicated below.

USCG Key Bridge Safety Zone



BALTIMORE HARBOR & PATAPSCO RIVER AREA

2024 Standard Racing Marks



Approximate positions of all marks are offered as a reference only. Government symbols and/or numbers may be changed. All changes are published in Notice to Mariners. Description and location of bouys have been updated through 01/25/2022.

Baltimore Harbor & Patapsco River Area – 2024 Standard Racing Marks

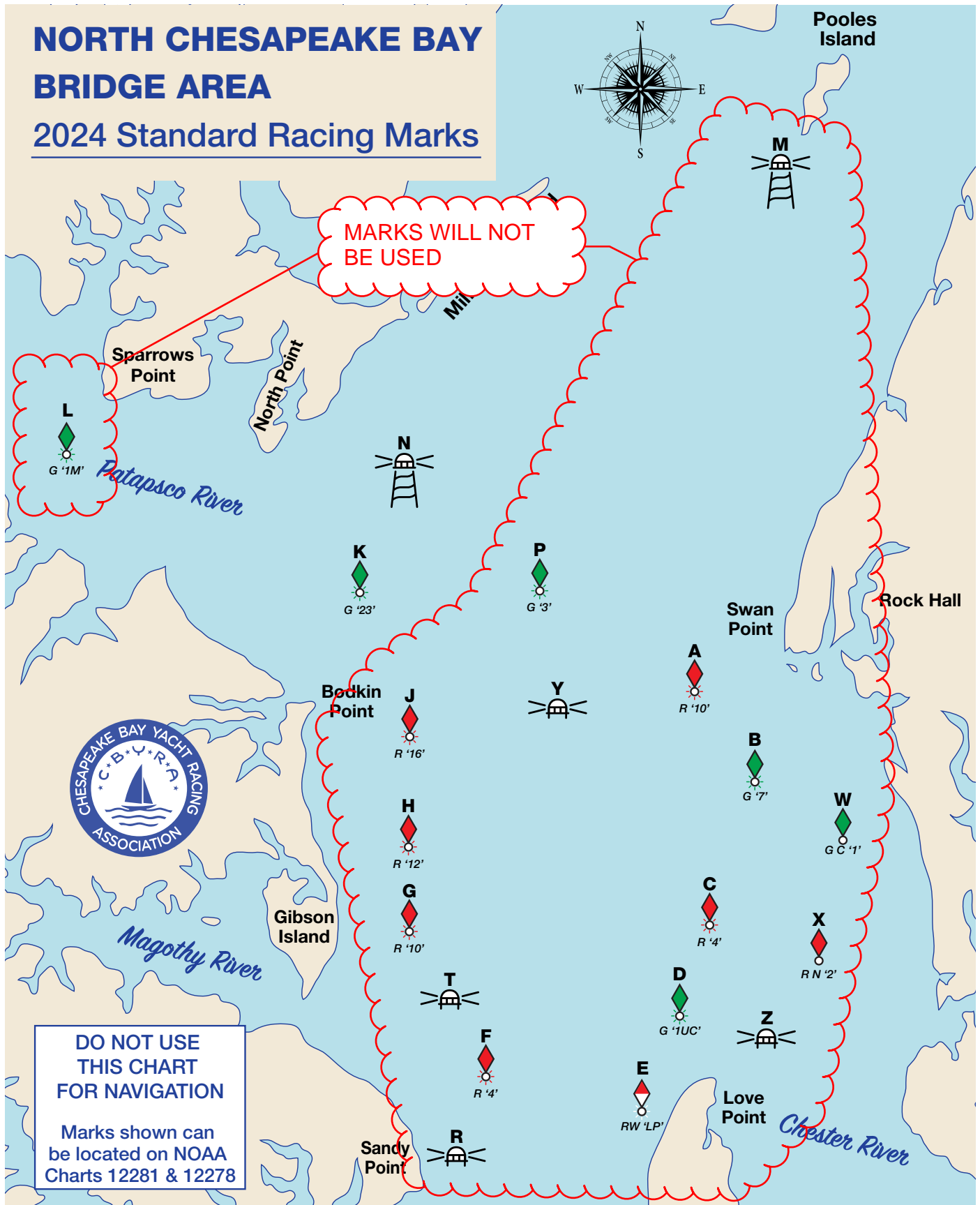
Mark	Govt. ID	Characteristics	Location	Lat 39 N	Lon 76 W
AA	G "3"	Q G	Brewerton Channel - Lighted Buoy 3	10.81	26.70
BB	G "7"	FI G 6s	Brewerton Channel - Lighted Buoy 7	11.15	27.81
CC	G "9"	FI G 4s	Brewerton Channel - Lighted Buoy 9	11.49	28.93
DD	G "11"	FI G 6s	Brewerton Channel - Lighted Buoy 11	11.69	29.62
FF	RN "2"		Stoney Creek - Buoy 2	10.84	30.30
GG	R "8"	Q R	Brewerton Channel - Lighted Buoy 8	13.71	32.31
HH	R "10A"	FI R 4s	Brewerton Channel - Lighted Buoy 10A	14.27	32.90
JJ	RG "NH"	FI (2+1)R 6s	Northwest Harbor - Channel Junction Lighted, Buoy NH	16.21	34.57
KK	G "5"	Q G	Seagirt Marine East Channel - Lighted Buoy 5	14.68	32.54
LL	R "6"	FI R 4s	Brewerton Channel - Lighted Buoy 6	13.33	31.90
MM	G "11"	FI G 2.5s	Seagirt Marine East Channel - Lighted Buoy 11	15.15	32.87
NN	GR "FM"	FI(2 + 1) G 6s	Fort McHenry Angle Junction, Lighted Buoy FM	15.40	34.31
OO	R "16"	Q R	Brewerton Channel - Lighted Buoy 16	14.94	33.61
PP	GC "11"		Brewerton Channel - Buoy 11	14.39	33.26
RR	G "3"	FI G 2.5s	Curtis Bay - Channel Lighted Buoy 3	13.28	32.58
SS	G "9"	FI G 4s	Brewerton Channel - Lighted Buoy 9	13.80	32.63
TT	R "8"	FI R 2.5s	Seagirt Marine West Channel - Lighted Buoy 8	15.30	33.21
K	G "23"	FI G 4s	Craighill Channel - Lighted Buoy 23	9.33	25.12
L	G "1M"	Q G	Brewerton Channel - Lighted Buoy 1M	12.05	30.78

Distance Between Marks

Use the table below to determine the distance in nautical miles between marks. If a distance is not shown, the course between those marks most likely crosses land and/or a shoal and should not be used.

	BB	CC	DD	FF	GG	HH	JJ	KK	LL	MM	NN	OO	PP	RR	SS	TT	K	L
AA	0.93	1.86	2.43	2.79	5.23	5.92	8.15	5.96	4.76	6.46	7.48	6.77	6.22	5.19	5.49	6.76	1.92	3.40
BB		0.93	1.50	1.96	4.33	5.03	7.29		3.85	5.60	6.59	5.88	5.33	4.27	4.58	5.90	2.77	2.47
CC			0.57	1.25	3.44	4.15	6.44		2.95	4.77	5.72	5.01	4.44	3.35	3.68	5.05	3.66	1.54
DD				1.00	2.90	3.62	5.93	3.75	2.41		5.20	4.49	3.91	2.79	3.15	4.56	4.21	0.97
FF					3.27	3.98	6.31	4.22	2.78	4.75	5.52	4.84	4.23	3.01	3.47	5.00	4.29	1.27
GG						0.72	3.05	0.99	0.50	1.50	2.29	1.59	1.00	0.48	0.26	1.74	7.09	2.04
HH							2.33	0.50	1.22	0.88	1.57	0.87	0.30	1.02	0.51	1.06	7.80	2.76
JJ								2.20	3.55	1.69	0.84	1.47	2.09	3.31	2.84	1.39	10.05	5.09
KK									1.44	0.54	1.55	0.87	0.63	1.40	0.88	0.81	7.86	2.96
LL										1.97	2.79	2.09	1.50	0.53	0.74	2.22	6.61	1.55
MM											1.14	0.61	0.82	1.88	1.36	0.30	8.37	3.50
NN												0.71	1.30	2.51	2.06	0.86	9.36	4.33
OO													0.61	1.84	1.37	0.48	8.65	3.63
PP														1.23	0.77	0.91	8.09	3.03
RR															0.52	2.08	7.01	1.86
SS																1.57	7.34	2.26
TT																	8.66	3.76
K																		5.17

NORTH CHESAPEAKE BAY BRIDGE AREA 2024 Standard Racing Marks



Approximate positions of all marks are offered as a reference only. Government symbols and/or numbers may be changed. All changes are published in Notice to Mariners. Description and location of bouys have been updated through 01/25/2022.

ALERT! Rocky shoals not shown on NOAA charts have been reported close to Marks M and N.

North Chesapeake Bay Bridge Area – 2024 Standard Racing Marks

Mark	Govt. ID	Characteristics	Location	Lat 39 N	Lon 76 W
A	R "10"	Q R	Upper Chesapeake Channel - Lighted Buoy 10	8.38	19.36
B	G "7"	FI G 6s	Upper Chesapeake Channel - Lighted Buoy 7	6.59	18.29
C	R "4"	Q R	Upper Chesapeake Channel - Lighted Buoy 4	5.65	17.89
D	G "1UC"	FI G 4s	Upper Chesapeake Channel - Lighted Buoy 1UC	4.81	18.86
E	RW "LP"	Mo (A) W	Upper Chesapeake Channel - Lighted Buoy LP	2.58	20.76
F	R "4"	FI R 4s	Craighill Channel - Lighted Buoy 4	2.26	22.83
G	R "10"	FI R 2.5s	Craighill Channel - Lighted Buoy 10	4.46	23.57
H	R "12"	FI R 4s	Craighill Channel - Lighted Buoy 12	5.18	23.57
J	R "16"	FI R 6s	Craighill Channel - Lighted Buoy 16	6.99	23.57
K	G "23"	FI G 4s	Craighill Channel - Lighted Buoy 23	9.33	25.12
L	G "1M"	Q G	Fort McHenry Channel - Lighted Buoy 1M	12.05	30.78
M	Fixed Lt	FI W 2.5s, 27ft	Pooles Island Bar Light	15.71	16.68
N	Fixed Lt	FI W 2.5s, 22ft	Craighill Channel - RANGE FRONT LIGHT	11.32	23.66
P	G "3"	FI G 4s	Bewerton Channel - Lighted Buoy 3	9.14	21.14
R	Fixed Lt	FI 6s 51ft 9M	Sandy Point Light	0.94	23.09
T	Fixed Lt	FI 2.5s 52ft	Craighill Channel - BALTIMORE LIGHT	3.55	23.94
U	RC Choice	Inflatable Drop	May be set by RC as Starting Line		
V	RC Choice	Inflatable Drop	May be set by RC as 1 mark on course		
W	GC "1"		Swan Creek - Entrance Buoy 1	5.57	15.25
X	RN "2"		Chester River - Entrance Buoy 2	4.03	16.34
Y	Fixed Lt	Iso W 6s, 89ft	Brewerton Channel - Tolchester Channel Range Rear Light	7.41	20.94
Z	Fixed Lt	FI w 6s, 31FT	Upper Chesapeake Channel - Love Point Light	3.42	17.02
PP	GC "11"	FI R 4s	Fort McHenry Channel - Buoy 11	14.39	33.26

Distance Between Marks

Use the table below to determine the distance in nautical miles between marks. If a distance is not shown, the course between those marks most likely crosses land and/or a shoal and should not be used.

	B	C	D	E	F	G	H	J	K	L	M	P	W	X	Y	Z
A	1.97	2.96	3.59	5.90	6.69	5.11	4.58	3.55	4.57	9.59	7.62	1.58	4.25	4.94	1.56	5.29
B		0.99	1.84	4.45	5.59	4.62	4.34	4.12	5.97	11.13	9.21	3.38	2.57	2.98	2.22	3.32
C			1.13	3.80	5.12	4.57	4.44	4.61	6.71	11.88	10.11	4.31	2.05	2.02	2.95	2.33
D				2.68	4.00	3.68	3.68	4.26	6.64	11.75	11.04	4.68	2.91	2.11	3.06	1.99
E					1.64	2.88	3.40	4.92	7.56	12.26	13.51	6.57	5.22	3.73	4.84	3.03
F						2.28	2.98	4.77	7.29	11.58	14.28	7.01	6.76	5.35	5.36	4.66
G							0.72	2.53	5.02		12.46	5.05	6.56	5.63	3.59	5.19
H								1.81	4.32		11.82	4.39	6.47	5.73	3.02	5.38
J									2.63	7.55	10.23	2.86	6.62	6.35	2.08	6.22
K										5.17	9.14	3.09	8.54	8.64	3.77	8.63
L												8.02	13.69	13.79	8.94	13.74
P													5.80	6.33	1.74	6.56
W														1.76	4.79	2.55
X															4.92	0.81
Y																5.02