

Francis Scott Key Classic

ROCK CREEK RACING ASSOCIATION

Sunday October 19, 2025



Sanction #: 25-110

Amendment #1 to the SI's (10/18/2025)

1. Replace the "Signals" paragraph with the following:

Signals: RRS 26 (Starting Races) as changed below:

CLASS	TIME	SIGNAL	Class Flag Displayed on RC Boat
	1055	Warning	
CRCA (Racer) CRCA (Cruiser)	1105	Start	
PHRF (One fleet)	1100	Start	
Multi-Hull	1110	Start	

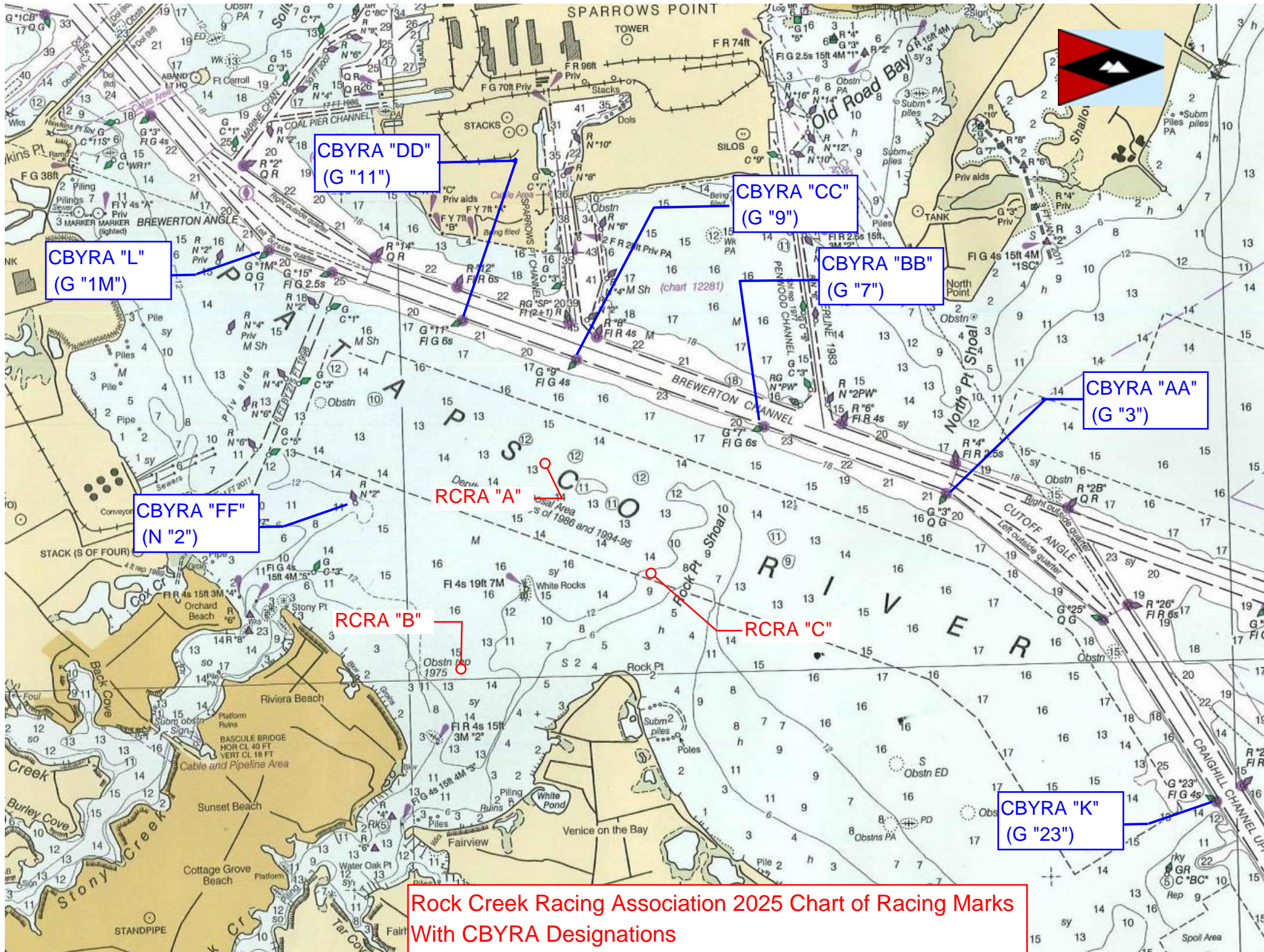
2. **Rendezvous** is modified as follows: At 1030 in the vicinity of **RCRA Mark "A"**
3. **The Start** is modified as follows: Between orange flag on Race Committee boat and **RCRA yellow buoy "A"**.
4. **Course/Rules:** Designated by letters displayed on Race Committee boat, as further described in the *CBYRA Green Book General Sailing Instructions* and NORTH CHESAPEAKE BAY BRIDGE AREA and BALTIMORE HARBOR & PATAPSCO RIVER AREA, with additional RCRA Yellow Marks as follows.

RCRA "A" N39° 10.902, W076 29.291'

RCRA "B" N39° 10.117, W076 29.706'

RCRA "C" N39° 10.500, W076 28.500'

For convenience, please see the attached chart with RCRA and CBYRA Marks Combined.



Rock Creek Racing Association 2025 Chart of Racing Marks
With CBYRA Designations

2025 RCRA Standard Courses **CBYRA MARKS in BLUE**

TO



FROM

	A	B	C	1	AA	BB	CC	5	DD	FF	L	9
	N39 10.902 W076 29.291	N39 10.117 W076 29.706	N39 10.500 W076 28.500	N39 10.212 W076 25.77	N39 10.820 W076 26.706	N39 11.165 W076 27.819	N39 11.500 W076 28.921	N39 09.697 W076 29.837	N39 11.690 W076 29.621	N39 10.845 W076 30.289	N39 12.050 W076 30.77	N39 12.700 W076 31.480
	YC "A"	YC "B"	YC "C"	G "25"	G "3"	G "7"	G "9"	R "2"	G "11"	RN "2"	G "1M"	G "3"
A		214° 0.85	123° 0.74	115° 2.81	104° 2.01	088° 1.18	037° 0.67	211° 1.28	354° 0.83	277° 0.78	303° 1.63	328° 2.47
B	034° 0.85		067° 1.01	Do Not Use	084° 2.43	066° 1.81	035° 1.52	205° 0.43	014° 1.58	339° 0.86	325° 2.10	343° 2.93
C	303° 0.74	247° 1.01		098° 2.15	077° 1.45	039° 0.84	041° 1.04	232° 1.3	323° 1.47	283° 1.44	300° 2.36	313° 3.19
1	295° 2.81	Do Not Use	270° 2.15		321° 0.90	312° 1.80	309° 2.80	Do Not Use	308° 3.30	291° 3.60	290° 5.20	311° 5.10
AA	284° 2.01	265° 2.43	257° 1.45	141° 0.90		302° 0.93	302° 1.84	255° 2.55	302° 2.50	281° 2.80	280° 3.40	307° 4.5
BB	268° 1.18	246° 1.81	219° 0.84	132° 1.80	122° 0.93		302° 0.92	236° 2.10	302° 1.58	271° 1.95	280° 2.49	303° 3.24
CC	217° 0.67	215° 1.52	221° 1.04	129° 2.80	122° 1.84	122° 0.92		212° 1.9	302° 0.65	250° 1.26	280° 1.54	312° 2.32
DD	174° 0.83	194° 1.58	143° 1.47	128° 3.30	122° 2.50	122° 1.57	122° 0.64	193° 2.00		218° 0.98	280° 0.97	316° 1.70
FF	097° 0.78	159° 0.86	103° 1.44	111° 3.60	101° 2.80	091° 1.95	070° 1.26	172° 1.18	038° 0.98		331° 1.26	344° 2.05
L	123° 1.63	145° 2.10	120° 2.36	110° 5.20	100° 3.40	100° 2.49	100° 1.54	151° 2.46	100° 0.97	151° 1.26		309° 0.85
9	148° 2.47	163° 2.93	133° 3.19	131° 5.10	127° 4.16	129° 3.24	132° 2.32	167° 3.25	136° 1.70	164° 2.06	129° 0.85	

Course in Magnetic Degrees

Distance in Nautical Miles

rev 4/22/19 dmm