



GYA OFFSHORE CHALLENGE CUP



June 18-21, 2026

Organizing Authority: **Gulfport Yacht Club**
Host Club: **Gulfport Yacht Club (GYC)**
Gulfport, Mississippi

SAILING INSTRUCTIONS

1. RULES

- 1.1 The regatta shall be governed by the rules as defined in *The Racing Rules of Sailing* (RRS) and by the [GYA Regulations for Sanctioned Events](#).
- 1.2 The US Sailing Prescriptions in the Preamble to Part 5, Section B, and RRS 63.1(b) are deleted.
- 1.3 The notation '[NP]' in a rule of the sailing instructions (SI's) means that a boat may not protest another boat for breaking that rule. This changes RRS 60.1.

2. NOTICES TO COMPETITORS

- 2.1. Notices to competitors will be posted on the Official Notice Board located on the lower deck. At the end of each day of racing the race committee will post its docking time as well as any boats that it intends to score in other than a finishing position. Notices of hearings will be posted here within 30 minutes of the expiration of protest time (flag "L" will NOT be displayed with this notice.)

3. SIGNALS MADE ASHORE

- 3.1. Signals made ashore shall be displayed from the signal mast at the Gulfport Yacht Club.
- 3.2. When flag AP is displayed ashore, '1 minute' is replaced with 'not less than 45 minutes'. This changes Race Signals AP.

4. SCHEDULE

- 4.1. The Race Committee has scheduled seven (7) races. A minimum of two (2) races must be completed to constitute a series.
- 4.2. Schedule of Events:

Thursday, June 18, 2026	1900	Briefing for Competitors, GYC Chart Room
Friday, June 19, 2026	1155	Distance Race, Warning Signal Race #1 Party with Live Music & Daily Trophies after Racing, Complimentary Beer during protest time
Saturday, June 20, 2026	1155	Windward-Leeward Courses, Warning Signal Race #2, Back-to-Back races. Party with Live Music & Daily Trophies after Racing, Free Beer during Protest Time
Sunday, June 21, 2026	1055	Windward-Leeward Courses Warning Signal 1st Race of the Day
	1530	No Warning Signal after this time. Trophy Ceremony following races (GYC Ballroom)
		Complimentary Beer during protest time

5. CLASS FLAG AND ORDER OF START

Class flags (streamers) will be issued at the briefing for competitors. Each boat shall conspicuously display its class flag (streamer) on its backstay while racing.

Class	Flag
A	White
B	Pink
C	Green
D	Purple

6. THE COURSE

6.1. The Course layout is shown on Sailing Instruction Exhibit A. Course “W2” will be a four (4)-leg Windward-Leeward course with offset marks and gate marks. All windward marks shall be left to port.

Classes	Course
A and B	Start – 1 – Offset – Gate – 2 – Offset – Finish
C and D	Start – 2 – Offset – Gate – 2 – Offset – Finish

6.2. Course “W2½” will be a five (5)-leg Windward-Leeward course with offset marks and gate marks. All windward marks shall be left to port.

Classes	Course
A and B	Start – 1 – Offset – Gate – 2 – Offset – Gate – Finish (2)
C and D	Start – 2 – Offset – Gate – 2 – Offset – Gate – Finish (2)

6.3. The initial windward mark (1) for classes A & B will be located approximately 125 to 175 percent of the distance to the initial windward mark (2) for classes C & D.

6.4. The course identifier and approximate compass bearing from the starting line to the windward mark will be displayed from the race committee signal boat before or with the warning signal.

6.5. The approximate distance in nautical miles from the starting line to the initial windward mark for each class will be displayed from the race committee signal boat before or with the preparatory signal.

6.6. The course shall not be shortened to less than two legs.

6.7. Courses for the long-distance race are reflected on Sailing Instruction Exhibit C. Courses will be displayed by number on or before the warning signal for each class.

7. MARKS

7.1. Mark 1 and Gate Marks will be orange tetrahedrons. Mark 2 will be a green tetrahedron. Offset marks will be an orange ball.

7.2. New marks, as provided in instruction 9 CHANGE OF THE NEXT LEG OF THE COURSE, will be yellow tetrahedrons. (Note: Mark 1 cannot be changed.)

8. THE START

8.1. Races shall be started in accordance with RRS 26.

8.2. The starting line will be between a staff displaying an orange flag on the race committee signal boat at the starboard end of the line and a staff displaying an orange flag on the race committee boat at the port end.

8.3. There will be an orange ball floating with a lanyard attached to the aft end of the Signal Boat. This orange ball and its lanyard are considered part of the race committee signal boat.

8.4. A boat starting later than ten (10) minutes after her starting signal shall be scored Did Not Start (DNS) without a hearing. This changes RRS A5.

- 8.5. When at a boat's starting signal any part of her hull is on the course side of the starting line, or she must comply with RRS 30.1, the Race Committee may announce on VHF 72 her bow / sail number. Failure to hear or understand the announcement on VHF, or the order of hail of the bow / sail number(s), shall not be grounds for redress.
- 8.6. [NP][DP] Boats whose preparatory signal has not been made shall keep clear of the starting area and of all boats whose preparatory signal has been made.
 - 8.6.1. The starting area is a rectangle with its borders 100 meters to windward and leeward and 100 meters to pin ends of the starting line.

9. CHANGE OF THE NEXT LEG OF THE COURSE

To change the next leg of the course, the RC will lay a new mark and remove the original mark as soon as practicable.

10. THE FINISH

- 10.1. The finishing line will be between a staff displaying a blue flag on an RC boat at one end and an orange ball on the other end.
- 10.2. When finishing to windward the finish line will be between a staff displaying a blue flag on an RC boat and Course Mark (2).
- 10.3. Flag "L" when displayed from the Race Committee Signal Boat at the finish indicates additional races to follow. This changes RRS Race Signals.

11. TIME LIMITS

- 11.1. The time limit for the long-distance race will be six (6) hours. The time limit will be 2.5 (2 1/2) hours for windward-leeward races.
- 11.2. Boats still racing and failing to finish within one (1) hour after the first boat in her class sails the course and finishes, shall be scored Did Not Finish (DNF). This changes or is in addition to RRS 35, A4, A5 and A10.

12. PROTESTS AND REQUESTS FOR REDRESS

- 12.1. Hearing Request Forms are available at the Protest Box located below the Official Notice Board on the lower deck. Protests, requests for redress, and requests for reopening shall be delivered to the protest room on the second floor within the appropriate time limit.
- 12.2. The protest time limit is 60 minutes after RC Signal boat docks. The protest time limit shall be posted on the official notice board.
- 12.3. Notices will be posted as soon as possible, but no later than 30 minutes after the protest time limit, to inform competitors of hearings in which they are parties or named as witnesses.
- 12.4. Hearings will be held in the protest room on the second floor.
- 12.5. In addition to the obligations of RRS 60.2, the following requirement applies, Rule 60.2 is changed to add the following requirements for a valid protest: "A boat shall inform the finish line race committee boat of her intent to file a protest and the sail number (or other identification) of the protested boat(s) either at the first reasonable opportunity after finishing, or if the protesting boat does not finish, at the first reasonable opportunity, and she must receive confirmation from the race committee." This changes RRS 60.2.
- 12.6. Protest hearings may be held virtually. The link will be made available and posted on the Official Notice Board if needed.

13. SCORING

- 13.1. Places will be determined by handicap correction per NOR 9.
- 13.2. A team's points for a race will be the sum of the scores of the best three boats of that team in the race. The team with the lowest total points overall for all races wins.

- 13.3. Ties for overall class standings will be broken using the method described in Appendix A 8. Should a tie on corrected time occur in the last race, the same procedure will be applied to the next to last race, and so on until the tie is broken.
- 13.4. Ties for overall team standings will be broken in favor of the team which has the most firsts, seconds, etc., until all places have been exhausted, using the team's best three boats in each race. Should a tie still exist it shall be resolved in favor of the team which scored better in the last race in the fastest rated class in which the tied teams had boats entered and scored differently, regardless of whether the boats' scores counted for the team. Should ties exist in all classes where both teams had boats entered in the last race, the same procedures will be applied to the next to last race, and so on until the tie is broken. This changes RRS Appendix A8.
- 13.5. The long-distance race scores will be adjusted by a multiple of 1.5. This changes RRS A4

14. SAFETY REGULATIONS

- 14.1. Prior to the warning signal for each race, each boat shall sail past the stern of the RC signal boat and hail her bow/sail number until acknowledged by the RC. [DP] (Discretionary Penalty)
- 14.2. A boat that retires from a race shall notify the RC as soon as possible. [DP]
- 14.3. A boat and its crew shall, at all times, keep clear of all commercial vessels and shall not maneuver in any manner which would cause a commercial vessel to be unable to sail their proper course or carry out their commercial functions in a normal manner.
 - 14.3.1. A boat whose actions or maneuvers result in a Danger Signal (5 Horns or Sounds) from a commercial vessel, shall be protested by the Race Committee.
 - 14.3.2. The penalty for breaking SI 14.3 shall be disqualification from the entire regatta in which case rule RRS 36 will not apply. (This changes RRS 36)

15. SUPPORT PERSON VESSELS

(DP) Team leaders, coaches, support vessels and spectator boats shall stay 150 yards outside of the racing area, and the starting and finishing lines, and their extensions, from the time of the preparatory signal until all boats have finished, or retired, or the RC signals postponement, general recall or abandonment.

16. RADIO COMMUNICATION

- 16.1. Race Committee VHF Channel will be announced at the competitor's briefing. Except in an emergency, a boat that is racing shall not make voice or data transmissions and shall not receive voice or data communication that is not available to all boats. This includes the use of cell phones. [DP]
- 16.2. [DP] All boats shall carry a VHF radio capable of communicating on channel 72. Channels 68, 69, and 71 may be used.
- 16.3. [DP] On the water, the Race Committee (RC) will make courtesy broadcasts to competitors on VHF radio channel 72. Channels 68, 69, and 71 may be used.
- 16.4. [DP] From the warning signal until the last boat finishes the race, except in an emergency or as required by a rule, a boat shall not make voice nor data transmissions and shall not receive voice nor data communication that is not available to all boats.
- 16.5. The RC may broadcast the course, bearing and distance information before the warning signal, start times, starting infractions, and information important to racing. Failure of the transmission, failure of any boat to receive or properly interpret this information, or any errors or omissions on the part of the hailed messages shall not constitute grounds for granting redress. (This changes RRS 61.4(b)(1))
- 16.6. [NP] Individual recalls and boats penalized under RRS 30.2 or RRS 30.3 may be broadcast on the designated VHF channel using bow/sail numbers.
- 16.7. Failure of the RC to make any broadcast or broadcast in a timely manner will not be grounds for a request for redress. (This changes RRS 61.4(b)(1))
- 16.8. The RC may broadcast any course changes over the designated VHF channel. Failure of a boat to hear such notification or failure to broadcast will not be grounds for redress. (This changes RRS 61.4(b)(1))

16.9. The RC intends to broadcast its intentions for the day at 0900 each morning on channel 72 VHF.
Channels 68, 69, and 71 may also be used.

17. TROPHIES

Trophies will be given according to GYA Regulations 20.6 and 20.7

18. FURTHER INFORMATION CONTACTS:

Regatta Chair: Christie Yoste, 228-365-3698
Gayle Weatherly, 228-863-2637

Principal Race Officer: Michael G. Hage, 228-697-8880

Yacht Club Contact Information:

Gulfport Yacht Club
800 East Pier, Gulfport, MS 39501
(228) 863-6796

Exhibit A

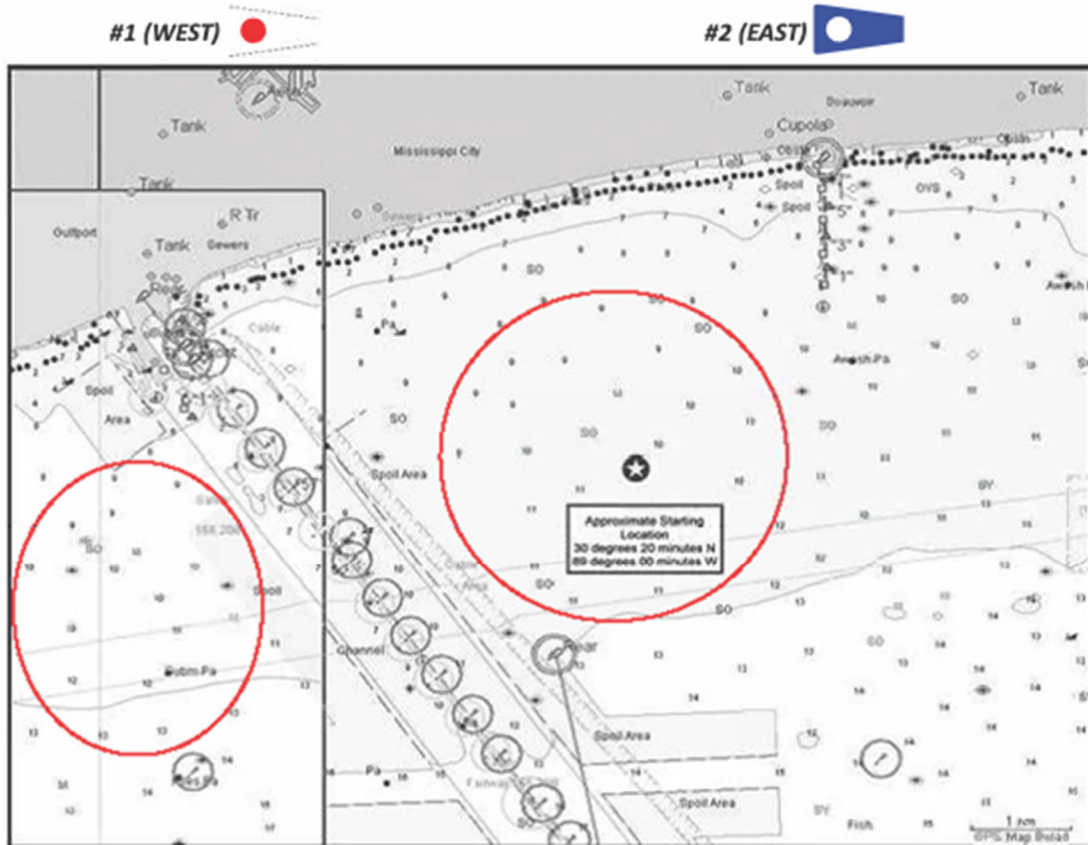


Exhibit B

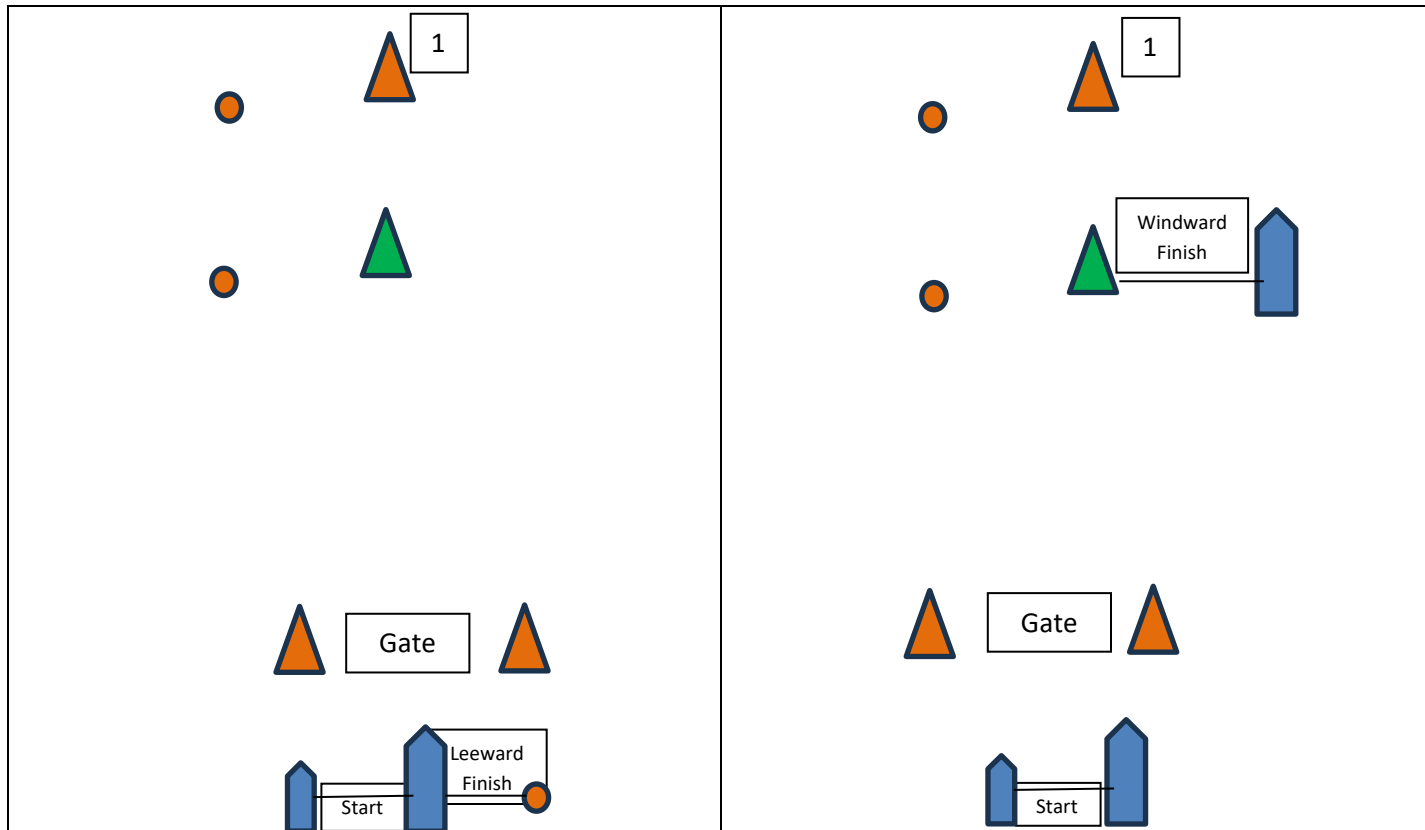
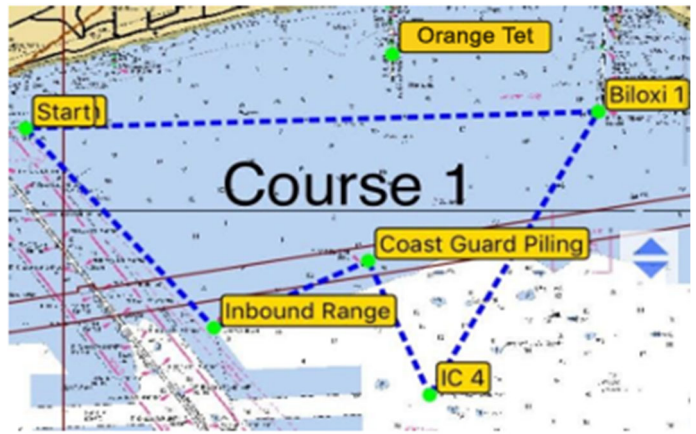


Exhibit C

Distance-Race Courses

NOTE: In the event that any mark below is missing an orange tetrahedron will be placed in the GPS Location of the missing mark

Course #1 – 23.08nm			
Leg	Heading	Distance	Rounding
Start to Inbound Range	140	4.29nm	Port
Inbound Rng to USCG Piling	67	2.57nm	Starboard
Piling to ICW 4	158	2.35nm	Port
ICW 4 to Biloxi 1	31	5.22nm	Port
Biloxi 1 to Finish	270	8.65nm	



Course #2 – 30.23nm			
Leg	Heading	Distance	Rounding
Start to J	119	11.52nm	Starboard
J to Outbound Range	251	5.98nm	Starboard
Outbound Range to ICW 4	27	3.52nm	Port
ICW4 to USCG Piling	338	2.35nm	Port
USCG Piling to Inbound Rng	248	2.57nm	Starboard
Inbound Range to Finish	320	4.29nm	



Course #3 – 16.67nm			
Leg	Heading	Distance	Rounding
Start to ICW4	127	7.46nm	Port
ICW4 to USCG Piling	338	2.35nm	Port
USCG Piling to Inbound Rng	247	2.57nm	Starboard
Inbound Range to Finish	320	4.29nm	



Course #4 – 20.43nm			
Leg	Heading	Distance	Rounding
Start to Inbound Range	140	4.29nm	Port
Inbound Rng to USCG Piling	67	2.57nm	Starboard
USCG Piling to ICW4	158	2.35nm	Port
ICW4 – Orange Tet	356	5.54nm	Port
Orange Tet – Finish	259	5.68nm	



Waypoints		
Start / Finish	30 21.321 N	89 04.226 W
Biloxi 1	30 21.589 N	88 54.211 W
Orange Tet	30 22.517 N	88 57.815 W
ICW 4	30 17.027 N	88 57.161 W
Inbound Range	30 18.108 N	87 00.935 W
J	30 15.944 N	88 52.420 W

Outbound Range	30 13.844 N	88 58.897 W
USCG Piling	30 19.188 N	88 58.234 W